

MONTHLY MEMBERSHIP PROGRESS REPORT

District 105 N

Results as of: 3/31/2024

GMT:

LOCATION ENGLAND

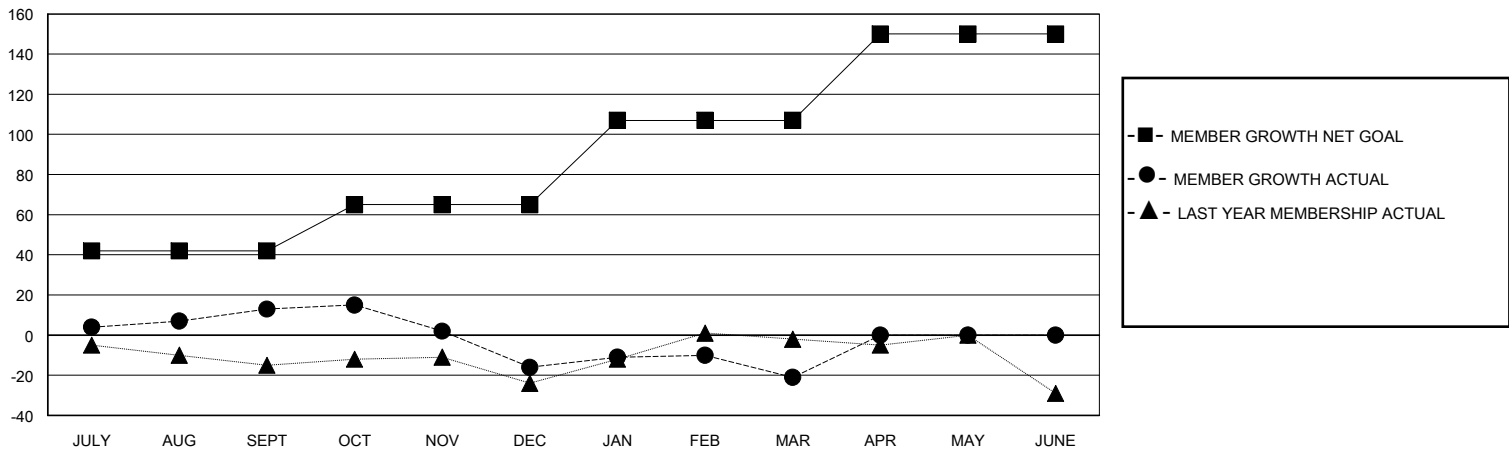
GMT CA

Clubs				Members			
RESULTS FOR 2023-2024				RESULTS FOR 2023-2024			
QUARTER	NEW CLUB GOAL	NEW CLUBS	DROPPED CLUBS	QUARTER	MEMBER GROWTH NET GOAL	MEMBER GROWTH ACTUAL	DROPPED MEMBERS ACTUAL (including transfers)
JULY/AUG/SEPT	0	0	1	JULY/AUG/SEPT	42	37	18
OCT/NOV/DEC	0	0	0	OCT/NOV/DEC	23	19	47
JAN/FEB/MAR	0	0	0	JAN/FEB/MAR	42	32	36
APR/MAY/JUNE	0	0	0	APR/MAY/JUNE	43	0	0

GOALS AND ACTUAL NEW CLUBS CUMULATIVE



GOALS AND ACTUAL MEMBERS CUMULATIVE



DROPPED CLUBS: 1	38 CLUBS OF 71 ADDED 1 OR MORE NEW MEMBERS	<u>GENDER DISTRIBUTION</u>	
		MALE	705 (68.31%)
<u>DROPPED MEMBERS</u>		FEMALE	327 (31.69%)
		TOTAL FAMILY UNIT MEMBERS 129	
DECEASED	10	FAMILY MEMBERS PAYING HALF DUES 65	
CLUB CANCELLED	0		
OTHER	91		
TOTAL	101		

[CLICK HERE FOR CUMULATIVE MEMBERSHIP DATA](#)